



# 329 | 335 INTERLOCKEN PARKWAY



Leasing & Marketing by:

**Newmark Grubb  
Knight Frank**



1800 Larimer Street, Suite 1700  
Denver, CO 80202  
303.892.1111  
www.ngkf.com

**Scott Garel**

303.260.4331

sgarel@ngkf.com

Procuring broker shall only be entitled to a commission, calculated in accordance with the rates approved by our principal only if such procuring broker executes a brokerage agreement acceptable to us and our principal and the conditions as set forth in the brokerage agreement are fully and unconditionally satisfied. Although all information furnished regarding property for sale, rental, or financing is from sources deemed reliable, such information has not been verified and no express representation is made nor is any to be implied as to the accuracy thereof and it is submitted subject to errors, omissions, change of price, rental or other conditions, prior sale, lease or financing, or withdrawal without notice and to any special conditions imposed by our principal.

©2017, Newmark Grubb Knight Frank. All Rights Reserved.

**Newmark Grubb  
Knight Frank**





# 329 | 335

## INTERLOCKEN PARKWAY

### 329 INTERLOCKEN

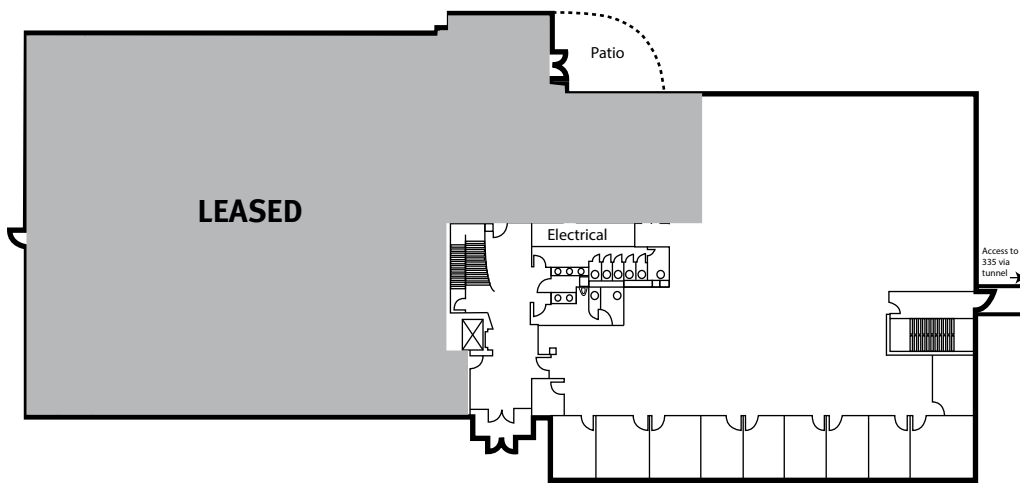
- AVAILABLE SF: 7,911 SF  
(Can be combined with 335 Interlocken to 80,772 SF via an enclosed conditioned walkway.)
- 5.5:1,000 RSF surface parking
- 31 offices

### 335 INTERLOCKEN

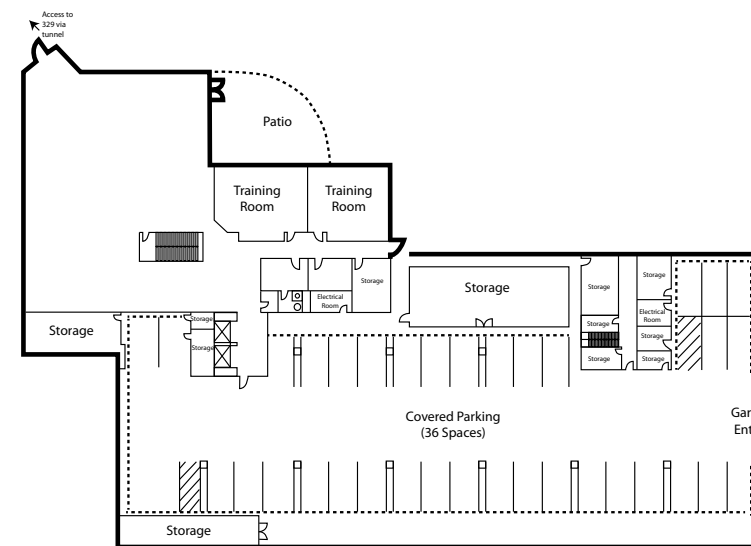
- AVAILABLE SF: 72,861 SF  
(Can be combined with 329 Interlocken to 80,772 SF via an enclosed conditioned walkway.)
- 4.0:1,000 RSF covered and surface parking (36 covered parking spaces)
- Includes Training Rooms, Board Room, and Patio
- 82 offices



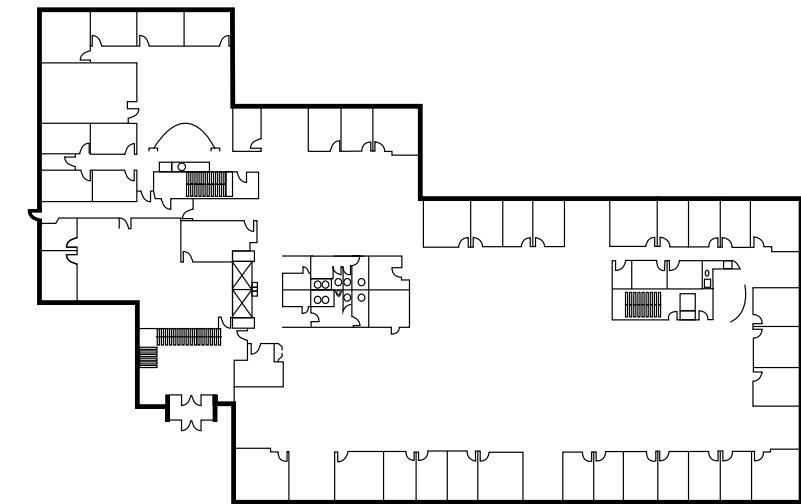
**329** FIRST FLOOR: 7,911 SF



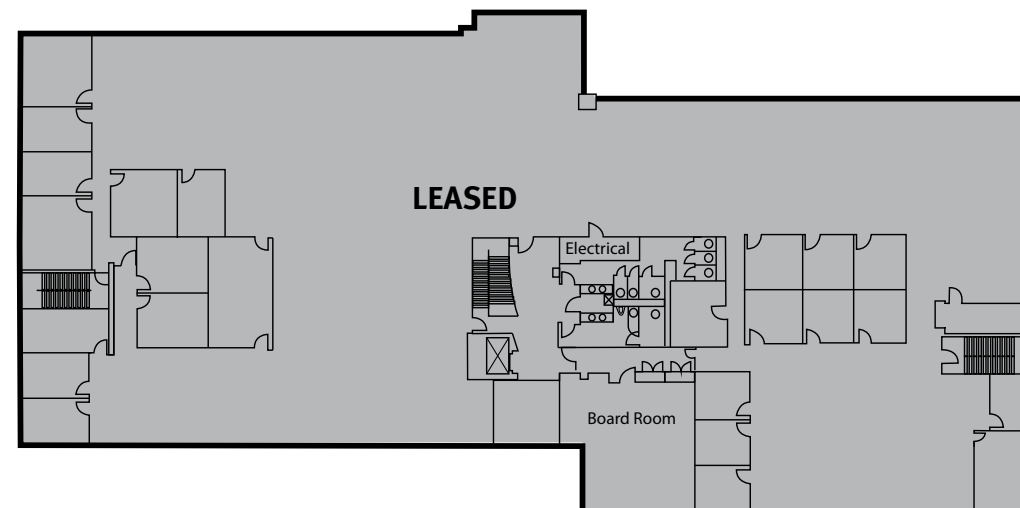
**335** LOWER LEVEL: 9,787 SF



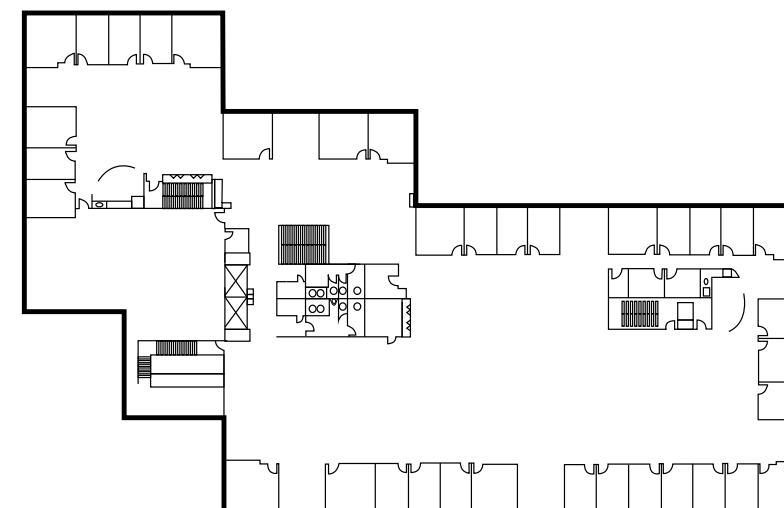
**335** FIRST FLOOR: 25,905 SF



**329** SECOND FLOOR: 20,846 SF



**335** SECOND FLOOR: 25,907 SF



**335** THIRD FLOOR: 11,262 SF

**EXECUTIVE OFFICES/BOARD ROOMS**

